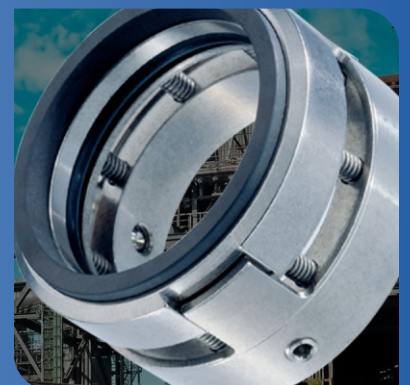
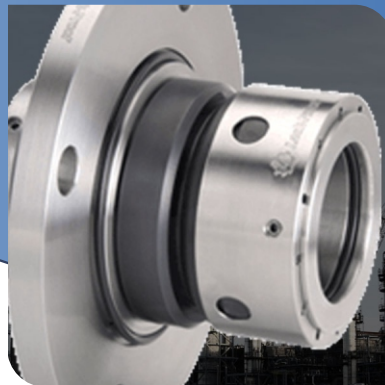
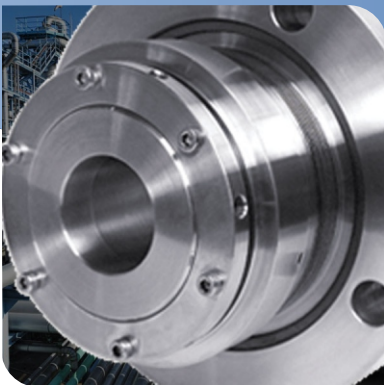




LEAK END
SEALING SYSTEM PVT LTD



WE BELIEVE IN QUALITY



COMPANY PROFILE

Leak End Sealing System was established in the year 2014 for manufacturer of import substitution product which is termed as " Mechanical Seals". After the company formation we are working under the name "Leak End Sealing System Pvt. Ltd."

In the initial stages company started manufacturing of Mechanical seals for chemical pumps at its Jogeshwari (Mumbai) factory.

The company is managed by Mr. Salman Dhukka At present we are carrying out are activities and operations from our Jogeshwari division, Maharashtra. We manufacture and supply entire range of Mechanical seals and shaft for chemical pumps, agitators, mixers, vacuum pumps, blenders and many other pharmacy equipments.

We apply ourselves to perform the right quality and the right time to all customers.

QUALITY

Leak End Sealing System believes that the correct raw material is very important for chemical, etc. industry. Therefore, we control the right raw material by double ways, certificate 3.1 and an alloy analyzer of famous trademark.

Further, dimensions are important, too. Leak End Sealing System performs the most strict inspection policy and strives to achieve zero defect. Leak End Sealing System checks every dimension according to drawings for every piece. And never let the deviation pass our inspection Dept.

Give us any trouble of production, with the low cost. Best quality, fast delivery and good service help you solve any trouble of production.

OUR PHILOSOPHY

You experience freedom in product design, without any standard limitation. Let us do complicated and overloaded work. And this in turn gives you a higher ability to differentiate your goods and services.

We have specially mastery in reactor seal

INTEGRITY

We preserve the integrity of the accounting and reporting records through the diligent and thorough application of pertinent laws, regulations and policies; through the accurate and timely completion of assigned tasks; and through the appropriate documentation of transactions.

Accountability: We all understand what is expected of us and are fully committed to meeting those expectations.

Transparency: We are committed to openly sharing information with others, effectively expressing our ideas and actively striving to understand the ideas of others.

Customer Service: We serve our customers by performing our tasks in a timely, consistent and accurate manner.

Teamwork: We work together to achieve our individual and common goals. We share knowledge, encourage and support each other, and respect individual differences.

Ownership: We perform our duties to the best of our abilities and take pride in our work.

Value: We continually examine the way we operate and seek opportunities to improve the effectiveness of our service

Our Products



Rubber Bellow Seal Type- 01LE

Single Acting, Dependent on Direction of Rotation



Face Materials	Silicon Carbide, Carbon, TC, Ceramic
Metal Parts	SS 316, SS 304
Seal Elastomer	Nitrile, Viton, EPDM, NBR
Applications	Water Pumps, Submersible Pumps, Sewage pump
Operating Limits	Shaft Diameter d1 :10....100mm Pressure p : 10 bar (max) temperature : -20....+180°C Speed: 3000 r.p.m

Rubber Bellow Seal Type- 02LE

Single Acting, Dependent on Direction of Rotation



Face Materials	Carbon / Lecrolloy, Ceramic, Silicon Carbide
Metal Parts	SS 316, SS 304
Seal Elastomer	Nitrile, Viton
Applications	Water Pumps, Submersible Pumps,
Operating Limits	Shaft Diameter d1 :12....100mm Pressure p : 08 bar (max) temperature : -20....+180°C Speed: 3000 r.p.m

Conical Coil Single Spring Seal Type- 03LE

Single Acting, Dependent on Direction of Rotation



Face Materials	Carbon, Ceramic, Tungsten Carbide, Silicon Carbide, Lecrolloy
Metal Parts	SS 316, SS 304
Seal Elastomer	Viton, EPDM, Silicon, Aflas, PTFE, GFT, Karlez, FEP, TTV
Applications	Water Pumps, Circulation Pumps for Central heating Chemical Process Pumps, Sewage & Submersible
Operating Limits	Shaft Diameter d1 :12....90mm Pressure p : 10 bar (max) temperature : -20....+180°C Speed: 3000 r.p.m

Singal Coil Spring Seal Type- 04LE

Single Acting, Dependent on Direction of Rotation

Face Materials	Carbon, Ceramic, Tungsten Carbide, Silicon Carbide, Lecrolloy
Metal Parts	SS 316, SS 304
Seal Elastomer	Viton, EPDM, Silicon, Aflas, GFT, Karlez, FEP, TTV, PTFE
Applications	Crystallizing Slurry, Suspended Solids Slurry, Saturated Chemical Slurry, General Chemical Slurry
Operating Limits	Shaft Diameter d1 :12....100mm Pressure p : 12 bar (max) temperature : -20....+180°C Speed: 3000 r.p.m



Multi Spring Seal Type- 05LE

Single Acting, Independent on Direction of Rotation

Face Materials	Carbon / Lecrolloy, Ceramic, Silicon Carbide
Metal Parts	SS 316, SS 304
Seal Elastomer	Viton, EPDM, Silicon, Aflas, PTFE, GFT, Karlez, FEP, TTV
Applications	Crystallizing Slurry, Suspended Solids Slurry, Saturated Chemical Slurry, General Chemicals Slurry, All Solvent
Operating Limits	Shaft Diameter d1 :20....100mm Pressure p : 20 bar (max) temperature : +180°C Speed: 3000 r.p.m



PTFE Bellow Seal Type- 06LE

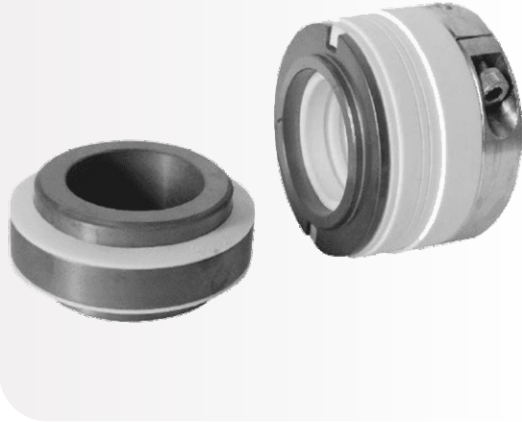
Single Acting, Independent on Direction of Rotation

Face Materials	GFT / Ceramic, Silicon Carbide / Silicon Carbide, Silicon Carbide / Ceramic, Carbon / Ceramic
Metal Parts Spring	SS 316, SS 304, Hastelloy – C, Alloy 20 Hastelloy – C
Seal Elastomer	PTFE Bellows
Applications	Extremely Corrosive Services
Operating Limits	Shaft Diameter d1 :18....100mm Pressure p : 06 bar (max) temperature : -30....+120°C Speed: 3000 r.p.m



PTFE Bellow With Replaceable Face Type- 07LE

Single Acting, Independent on Direction of Rotation



Face Materials	GFT / Ceramic, Silicon Carbide / Silicon Carbide, Silicon Carbide / Ceramic, Carbon / Ceramic
Metal Parts	SS 316, SS 304, Hastelloy – C, Alloy 20
Seal Elastomer	PTFE and GFT
Applications	Extremely Corrosive Services
Operating Limits	Shaft Diameter d1 :18....100mm Pressure p : 20 bar (max) temperature : -20....+260°C Speed: 3000 r.p.m

Reverse Balance Multi Spring Seal Type- 08LE

Single Acting, Independent on Direction of Rotation

Face Materials	Carbon, Ceramic, Tungsten Carbide, Silicon Carbide
Metal Parts	SS 316, SS 304, Hastelloy – C, Alloy 20
Seal Elastomer	Viton, EPDM, TTV, FEP and FFKM
Applications	Petrochemicals, Petroleum Refineries, General Chemicals, Light Hydrocarbons
Operating Limits	Shaft Diameter d1 :16....70mm Pressure p : 08 bar (max) temperature : +120°C Speed: 3000 r.p.m



Metal Bellow Seal Type- 09LE

Single Acting, Independent on Direction of Rotation



Face Materials	Carbon / Silicon Carbide, Carbon / Tungsten Carbide, Silicon Carbide / Tungsten Carbide
Metal Parts Spring	SS 316, SS 304, carpenter 42
Seal Elastomer	Hast- C, Am350, Inconel
Applications	Chemicals, Petrochemical, Refinery, Corrosive Chemical
Operating Limits	Shaft Diameter d1 :25....100mm Pressure p : 25 bar (max) temperature : -70....+350°C Speed: 3000 r.p.m

Grundfos Seal Type- 10LE

Single Acting, Independent on Direction of Rotation



Face Materials	Carbon, Ceramic, Silicon Carbide, Tungsten Carbide
Metal Parts	SS 316, SS 304
Seal Elastomer	Viton, EPDM, Nitrile
Applications	Slurry pump, Pulp & paper, Sludge & Syrup pump, Chemical, Petrochemical & Refinery
Operating Limits	Shaft Diameter d1 :12....22mm Pressure p : 05 bar (max) temperature : -45....+180°C

M7N Seal Type- 11LE

Single Acting, Independent on Direction of Rotation

Face Materials	Carbon, Ceramic, Tungsten Carbide, Silicon Carbide
Metal Parts	SS 316, SS 304, Hastelloy – C, Alloy 20
Seal Elastomer	Viton, EPDM, Silicon, Aflas, PTFE, GFT, Karlez, FEP, TTV
Applications	Petrochemicals, Petroleum Refineries, General Chemicals, Light Hydrocarbons
Operating Limits	Shaft Diameter d1 :10....100mm Pressure p : 08 bar (max) temperature : -20.....200°C Speed: 3000 r.p.m



Single Cartridge Seal Type- 12LE

Single Acting, Independent on Direction of Rotation



Face Materials	Carbon, Tungsten Carbide, Silicon Carbide
Metal Parts	SS 316, SS 304
Seal Elastomer	Viton, EPDM, Silicon, Aflas, PTFE, GFT, Karlez, FEP, TTV
Applications	Slurry pump, Pulp & paper, Sludge & Syrup pump, Chemical, Petrochemical & Refinery
Operating Limits	Shaft Diameter d1 :18....100mm Pressure p : 5.....35 bar (max) temperature : -20....+260°C Speed : 3000 r.p.m

Dual Cartridge Seal Type- 13LE

Single Acting, Independent on Direction of Rotation



Face Materials	Carbon, Ceramic, Tungsten Carbide, Silicon Carbide
Metal Parts	SS 316, SS 304, Hastelloy – C, Alloy 20
Seal Elastomer	Viton, EPDM, Silicon, Aflas, PTFE, GFT, Karlez, FEP, TTV
Applications	Slurry pump, Pulp & paper, Sludge & Syrup pump, Chemical, Petrochemical & Refinery
Operating Limits	Shaft Diameter d1 :18....100mm Pressure p : 05...35 bar (max) temperature : -20.....260°C Speed: 3000 r.p.m

Metal Bellow Cartridge Seal Type- 14LE

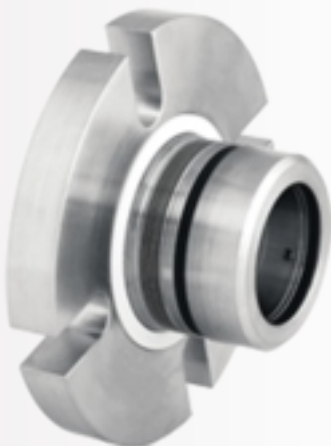
Single Acting, Independent on Direction of Rotation

Face Materials	Carbon, Tungsten Carbide, Silicon Carbide
Metal Parts Spring	SS 316, SS 304
Seal Elastomer	Viton, EPDM, Silicon, Aflas, PTFE, GFT, Karlez, FEP, TTV
Applications	Slurry pump, Pulp & paper, Sludge & Syrup pump, Chemical, Petrochemical & Refinery
Operating Limits	Shaft Diameter d1 :18....100mm Pressure p : 05...35 bar (max) temperature : -20....+260°C Speed: 3000 r.p.m



Slurry Seal Type- 15LE

Single Acting, Independent on Direction of Rotation



Face Materials	Carbon, Silicon Carbide
Metal Parts	SS 316, SS 304
Seal Elastomer	Viton, EPDM, Silicon, Aflas, PTFE, GFT, Karlez, FEP, TTV
Applications	Slurry pump, Pulp & paper, Sludge & Syrup pump, Chemical, Petrochemical & Refinery
Operating Limits	Shaft Diameter d1 :18....100mm Pressure p : 5....25 bar (max) temperature : -40....+260°C Speed : 3000 r.p.m



Dry Running Seal Type- 16LE

For Top Entry Agitators, Vessels and Mixers
 Single Acting, Independent on Direction of Rotation

Face Materials	Carbon , Silicon Carbide and Tungsten carbide
Metal Parts	SS 316, SS 304
Seal Elastomer	Viton, EPDM, Silicon, Aflas, PTFE, GFT, Karlez, FEP, TTV
Applications	Food Products, Pharmaceutical Products
Operating Limits	Shaft Diameter d1 :15....150mm Pressure p : 08 bar (max) temperature : -30.....150°C Speed: 3000 r.p.m

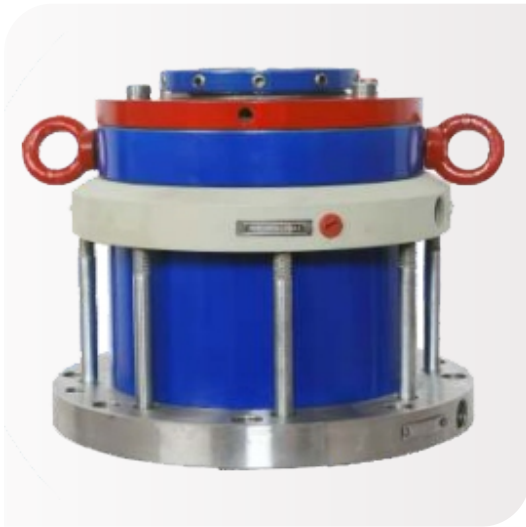
Dry Running Seal Type- 17LE

Dry running mechanical seals are used for mixers, agitators and reactors for cleanability

These seals were developed for sanitary applications where product contamination from barrier fluids is unacceptable. The seals feature sloped internal surfaces to facilitate drainage and enhance cleanability, including the debris well flush ports. Internal metallic parts exposed with optional electropolishing and all components.



Face Materials	Carbon, Silicon Carbide, Tungsten Carbide
Metal Parts Spring	SS 316, SS 304
Seal Elastomer	FKM / TTV / PTFE / GFT / FEP / Chemraz
Applications	Long and reliable service life, Innovative seal setting mechanism, Self lubricants faces, Easy to install
Operating Limits	Pressure : Full Vaccum To 6 Bar Temperature : -20° C To 120° C Speed : 4000 RPM



Double Reactor Seal Type- 18LE

Seals are used to seal agitators, mixers and blenders as top, bottom and side entry drives

These seals are working with the use of coolant and buffer fluid and applied in case of aggressive and hazardous media. These seals find application in various industries such as chemicals, petrochemicals, oil refineries, solvents, fertilizers and others. It require no shaft or sleeve step for balancing, shrink disk attachments, inboard stationary seat axially secured flange accordingly. It eliminates the possibility of product contamination, since there is no use of barrier fluid. It gives good performance in high vacuum conditions which is cost effective and economical. These seals can be easily implemented and repaired.

Face Materials	Carbon, Silicon Carbide, Tungsten Carbide
Metal Parts Spring	SS 316, SS 304
Seal Elastomer	PTFE / FKM / TTV / EPR / Karlez / FEP /
Applications	Cooling jacket help for maintaining temperature as per requirement, Available with / without bearing, Easy to install, It has a high performance
Operating Limits	Pressure : Full vacuum to 40 bar Temperature : -40° to 280°C Speed : RPM subject to specification



Dual Mechanical Seal Type- 19LE

For Top Entry Agitators, Vessels and Mixers
 Single Acting, Independent on Direction of Rotation

Face Materials	Carbon, Silicon Carbide, Tungsten Carbide
Metal Parts Spring	SS 316, SS 304
Seal Elastomer	Viton, EPDM, Silicon, Aflas, PTFE, GFT, Karlez, FEP, TTV
Applications	Corrosive Chemical, General light Chemical, Food Products, Pharmaceutical Products
Operating Limits	Shaft Diameter d1 :25....200mm Pressure V.....30 bar (max) temperature : -30....+260°C Speed: 3000 r.p.m



Thermosyphon Vessel

Metal Parts	Thermosyphon Shell : Carbon Steel / SS 304 / SS 316 / MS Cooling Coil : SS 304 / SS 316
Operating Limits	20 Pressure Limit : 20 bar 40 Pressure Limit : 40 bar Temperature (max) : 200°C

Pump Spares & Rubber Products





LEAK END
SEALING SYSTEM PVT LTD

Office Address

A/204, Mujtaba Bldg, Momin Nagar,
Patel Estate Road, Jogeshwari (west),
Mumbai - 400 102.

Workshop Address

Unit No. 5 Hanumant Singh Chawl,
Behind Ajit Class Bus Stop,
Jogeshwari (west), Mumbai - 400 102.

Contact & Email

+91 7208575949
+91 9004028286
+91 7600808803
Info@leakendseals.com
leakendseals@gmail.com

Leak End
Sealing System PVT. LTD.

www.leakendseals.com